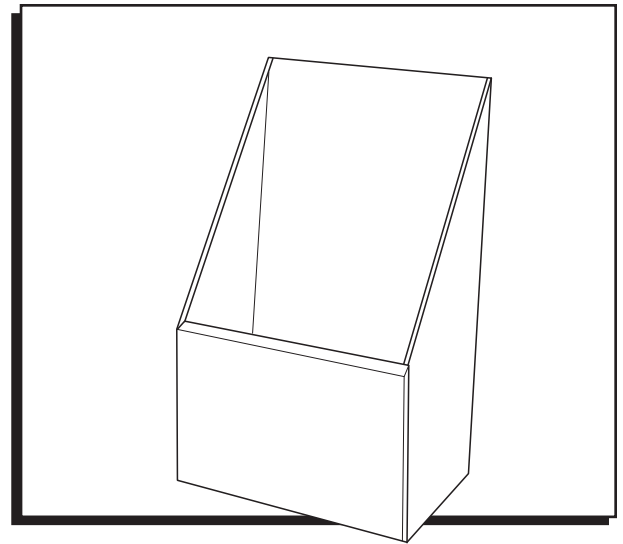


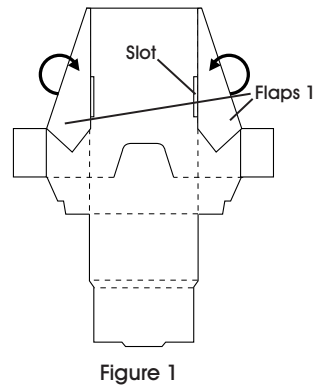
# ULINE S-15194 CORRUGATED PAMPHLET HOLDER

1-800-295-5510  
uline.com

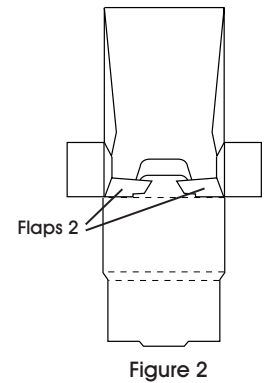


## ASSEMBLY

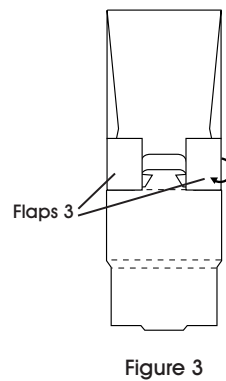
1. Fold in the sides along score line and tuck Flaps 1 into slots. (See Figure 1)



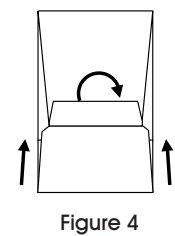
2. Fold in Flaps 2 and place the unit upright. Back support should pop out. (See Figure 2)



3. Fold Flaps 3 in to create a front. (See Figure 3)

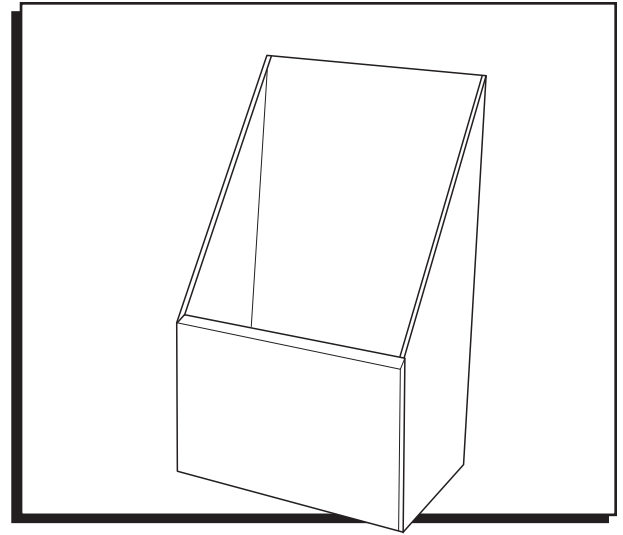


4. Fold the front in and over, tucking it in securely. (See Figure 4)



**ULINE** S-15194  
**PORTAPAMFLETOS  
DE CARTÓN**

01-800-295-5510  
uline.mx



**ENSAMBLE**

1. Doble los lados hacia adentro por la línea marcada y meta las Solapas 1 en las ranuras. (Vea Diagrama 1)

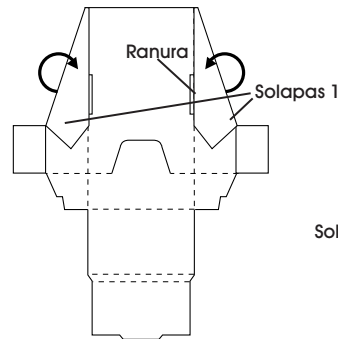


Diagrama 1

2. Doble las Solapas 2 hacia adentro y coloque la unidad en posición vertical. El soporte del respaldo debería sobresalir hacia afuera. (Vea Diagrama 2)

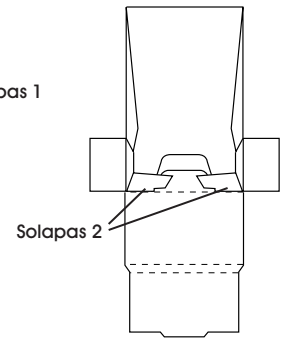


Diagrama 2

3. Doble las Solapas 3 hacia adentro para crear la parte delantera. (Vea Diagrama 3)

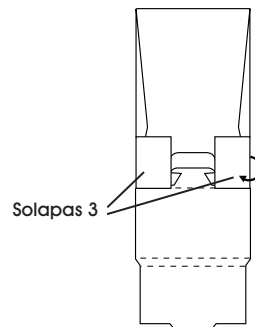


Diagrama 3

4. Doble bien la parte delantera por encima y hacia adentro. (Vea Diagrama 4)

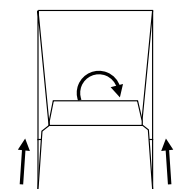
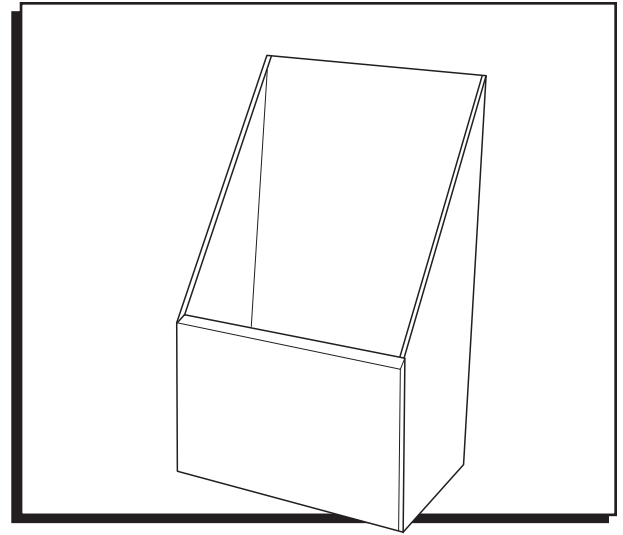


Diagrama 4

**ULINE S-15194**  
**PORTE-BROCHURES**  
**EN CARTON ONDULÉ**

1-800-295-5510  
uline.ca



**ASSEMBLAGE**

1. Pliez les côtés le long de la pliure vers l'intérieur et insérez les Rabats 1 dans les fentes. (Voir Figure 1)

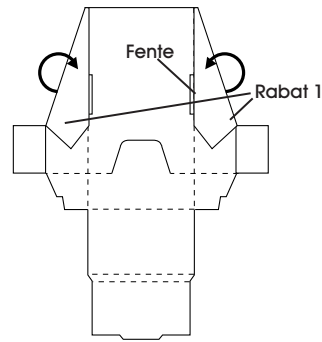


Figure 1

2. Pliez les Rabats 2 vers l'intérieur et placez l'unité à la verticale. Le support arrière devrait ressortir. (Voir Figure 2)

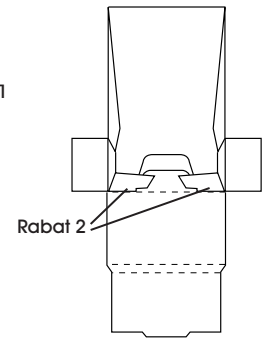


Figure 2

3. Pliez les Rabats 3 vers l'intérieur pour créer la face avant. (Voir Figure 3)

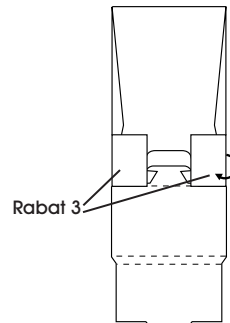


Figure 3

4. Pliez la face avant vers l'intérieur et repliez-la en la rentrant bien en place. (Voir Figure 4)

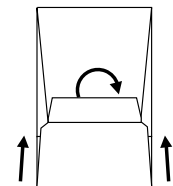


Figure 4