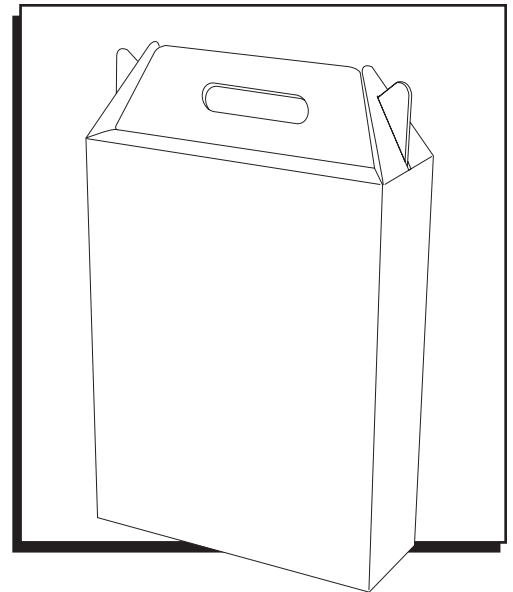


ULINE S-18289

**3 BOTTLE
WINE TOTE**

1-800-295-5510
uline.com



ASSEMBLY

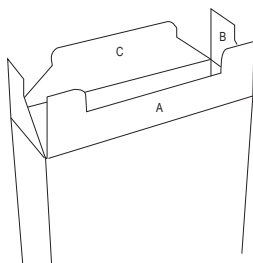


Figure 1

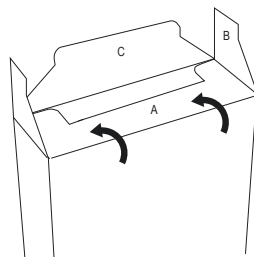


Figure 2

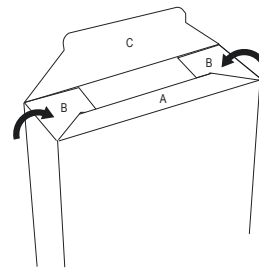


Figure 3

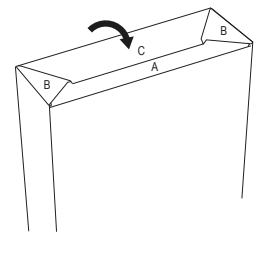


Figure 4

1. Push sides in toward the middle to open tote. Flip upside down to assemble the bottom. (See Figure 1)
2. Bend flap (A) and then flaps (B) at creases. (See Figures 2 and 3)
3. Bend flap (C) at crease and fold inside the middle slot created from step 2. (See Figure 4)
4. Flip the tote over. Bend the inside flap at the crease to form three compartments. (See Figures 5 and 6)
5. To close the top, bring hand holes together, and push down. Slide the slotted side tabs over the top until they lock into place.

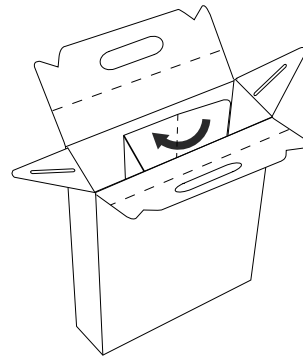


Figure 5

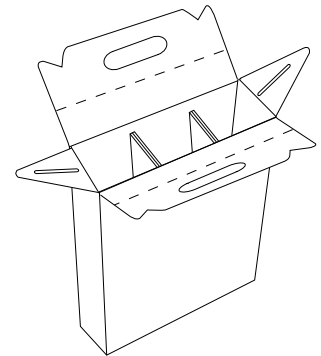


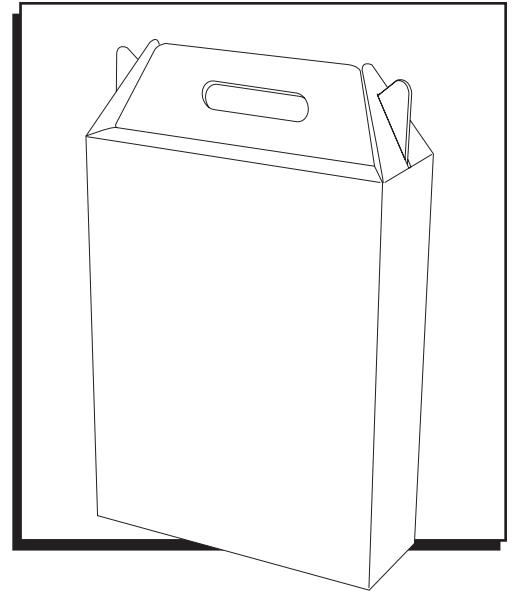
Figure 6

ULINE S-18289

**CAJAS CON ASA PARA
VINO – 3 BOTELLAS**

01-800-295-5510

uline.mx



ENSAMBLE

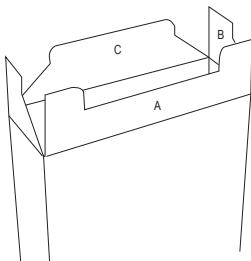


Diagrama 1

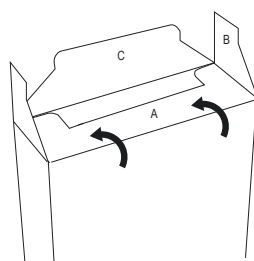


Diagrama 2

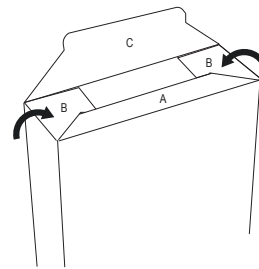


Diagrama 3

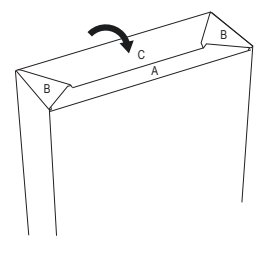


Diagrama 4

1. Empuje los laterales hacia adentro y hacia el centro para abrir la caja. Voltee la caja al revés para ensamblar la parte inferior. (Vea Diagrama 1)
2. Doble la solapa (A) y luego las solapas (B) por los pliegues. (Vea Diagramas 2 y 3)
3. Doble la solapa (C) por el pliegue hacia adentro de la ranura central creada en el paso 2. (Vea Diagrama 4)
4. Voltee la caja de nuevo hacia abajo. Doble la solapa interior por el pliegue para formar tres compartimentos. (Vea Diagramas 5 y 6)
5. Para cerrar la parte superior, acerque las asas y empuje hacia abajo. Deslice las pestañas laterales ranuradas por encima de la parte superior hasta que se traben en su lugar.

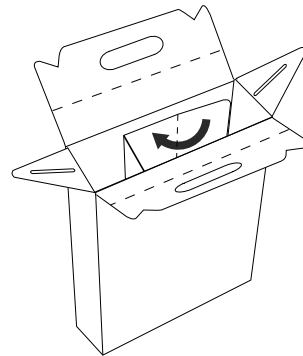


Diagrama 5

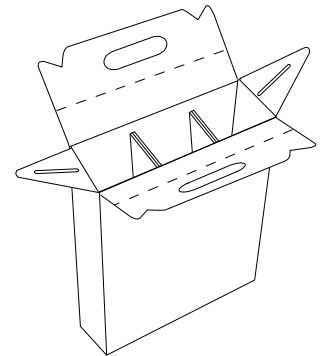
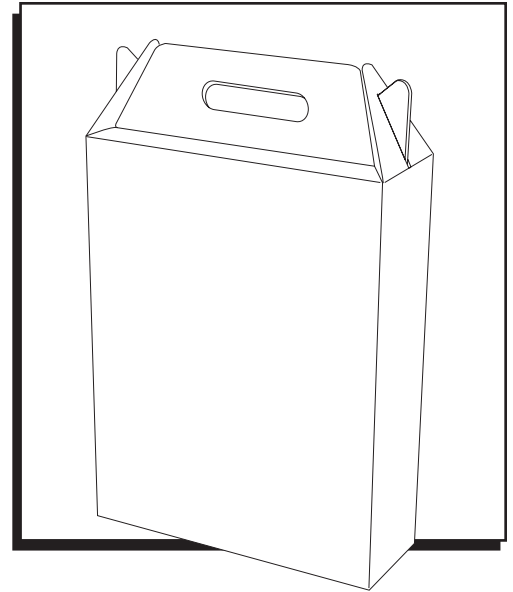


Diagrama 6

ULINE S-18289

BOÎTE DE TRANSPORT POUR LE VIN – 3 BOUTEILLES

1-800-295-5510
uline.ca



ASSEMBLAGE

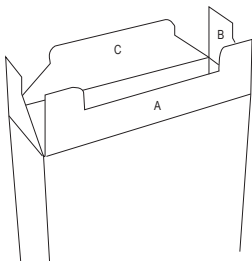


Figure 1

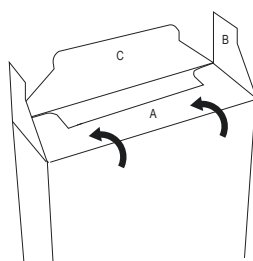


Figure 2

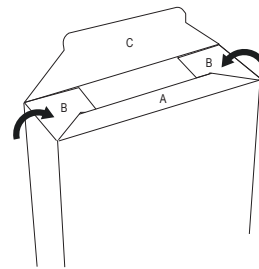


Figure 3

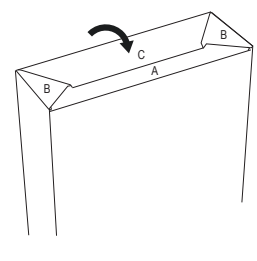


Figure 4

1. Poussez les côtés à l'intérieur vers le centre pour ouvrir la boîte. Inversez la boîte pour assembler le dessous. (Voir Figure 1)
2. Pliez le rabat (A), puis pliez les rabats (B) à la pliure. (Voir Figures 2 et 3)
3. Pliez le rabat (C) à la pliure et insérez-le dans la fente du milieu formée à l'étape 2. (Voir Figure 4)
4. Retournez la boîte à l'endroit. Pliez le rabat intérieur à la pliure pour former trois compartiments. (Voir Figures 5 et 6)
5. Pour fermer le dessus, ramenez les orifices des poignées ensemble et poussez-les vers le bas. Faites glisser les languettes à fente latérales sur le dessus de la boîte jusqu'à ce qu'elles soient bien entrées en place.

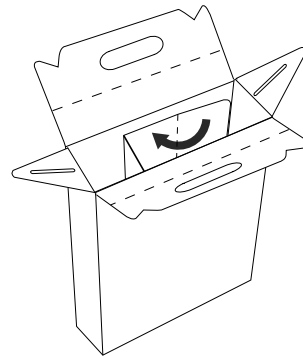


Figure 5

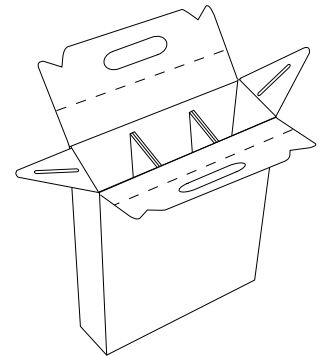


Figure 6