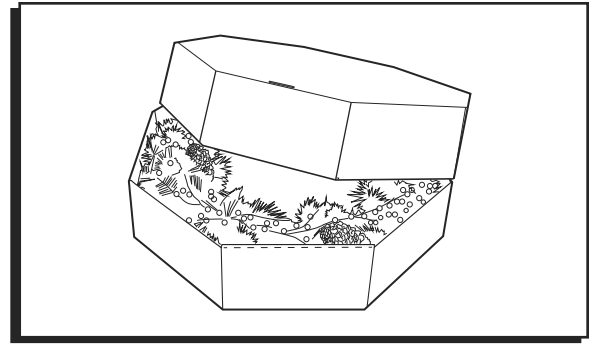


# ULINE S-18971 WREATH BOX

1-800-295-5510  
uline.com



## ASSEMBLY

Figure 1

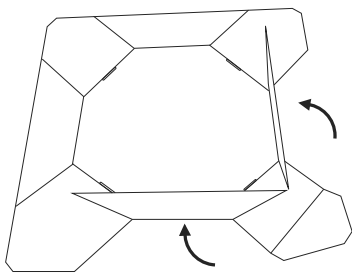


Figure 2

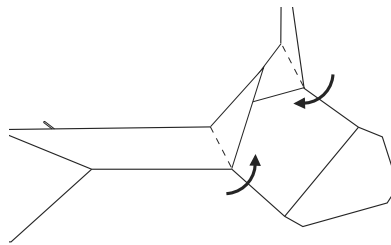


Figure 3

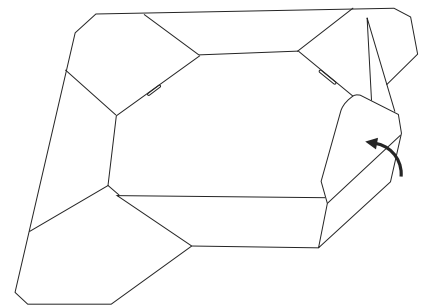


Figure 4

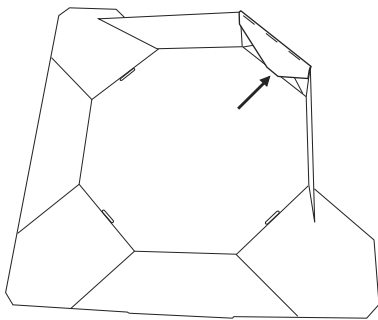


Figure 5

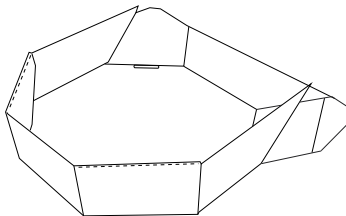
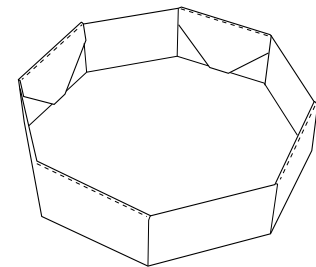
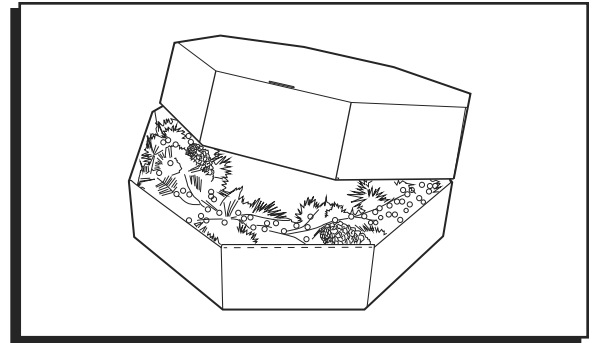


Figure 6



1. Lay the bottom of the wreath box white side down (kraft side up). Fold up two adjacent long panels on the creases. (See Figure 1)
2. Fold end tabs on each long panel inward, so that the two tabs meet in the middle. (See Figure 2)
3. Fold smaller panel in between the two long panels at the creases, up and over the two tabs. (See Figure 3)
4. Tuck the end of the smaller panel into the slot at the bottom of the wreath box. (See Figure 4)
5. Complete steps 1-4 on the remaining three sides. (See Figures 5 and 6)
6. Repeat steps 1-5 for the top.



## ENSAMBLE

Diagrama 1

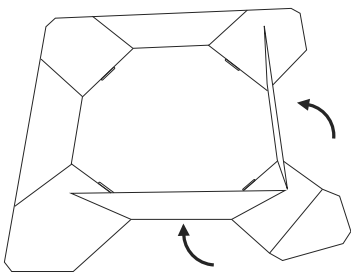


Diagrama 2

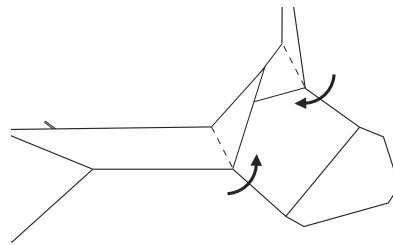


Diagrama 3

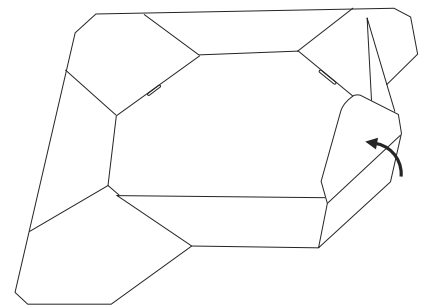


Diagrama 4

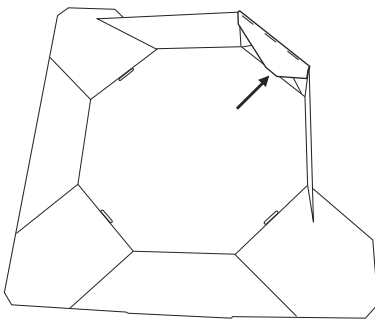


Diagrama 5

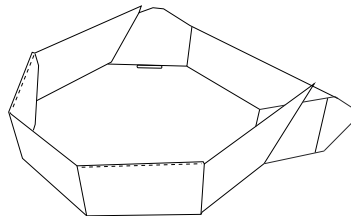
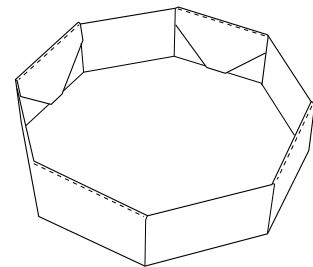
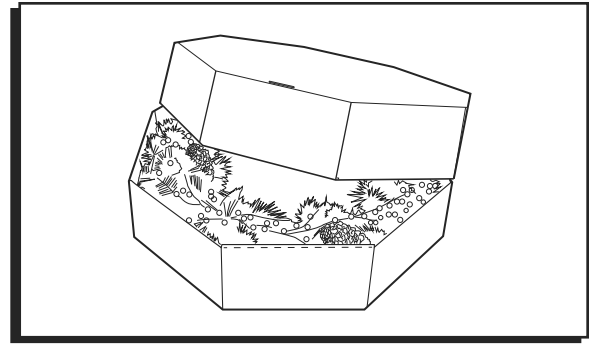


Diagrama 6



1. Tienda la caja para corona con el fondo blanco hacia abajo (el lado kraft hacia arriba). Doble hacia arriba los paneles largos adyacentes por las marcas. (Vea Diagrama 1)
2. Doble las solapas de los extremos en cada panel interior, de forma que las dos solapas se junten al centro. (Vea Diagrama 2)
3. Doble el panel pequeño en medio de los dos paneles largos siguiendo las marcas, hacia arriba y sobre las dos solapas. (Vea Diagrama 3)
4. Ajuste el extremo del panel pequeño dentro de la ranura en el fondo de la caja para corona. (Vea Diagrama 4)
5. Termine los pasos 1-4 de los tres lados restantes. (Vea Diagrama 5 y 6)
6. Repita los pasos 1-5 para la tapa.



## ASSEMBLAGE

Figure 1

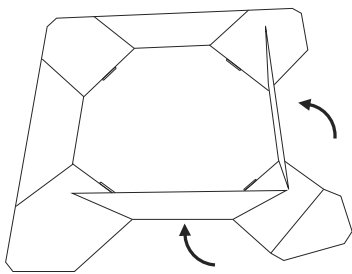


Figure 2

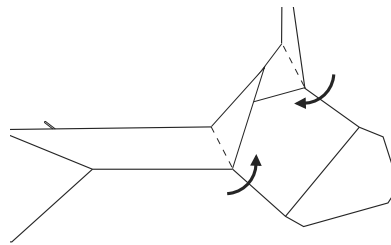


Figure 3

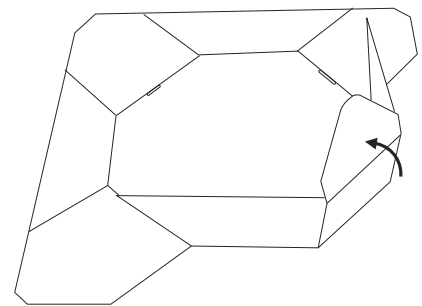


Figure 4

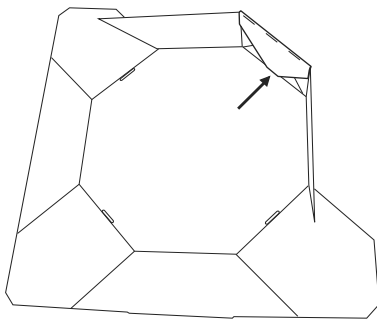


Figure 5

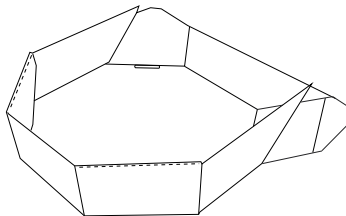
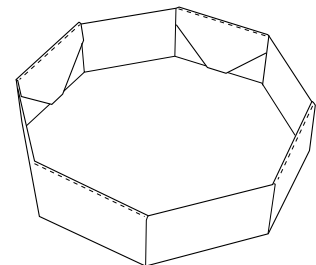


Figure 6



1. Placez le fond de la boîte à couronne avec le côté blanc orienté vers le bas (le côté kraft, vers le haut). Pliez deux longs panneaux adjacents aux pliures. (Voir Figure 1)
2. Pliez les languettes situées aux extrémités de chaque panneau vers l'intérieur afin qu'elles se retrouvent au milieu. (Voir Figure 2)
3. Pliez le panneau plus petit se trouvant entre les deux longs panneaux aux pliures, vers le haut et par-dessus les deux panneaux. (Voir Figure 3)
4. Insérez l'extrémité du panneau plus petit dans la fente située sur le fond de la boîte à couronne. (Voir Figure 4)
5. Effectuez les étapes de 1 à 4 pour les trois côtés restants. (Voir Figures 5 et 6)
6. Répétez les étapes de 1 à 5 pour le dessus.