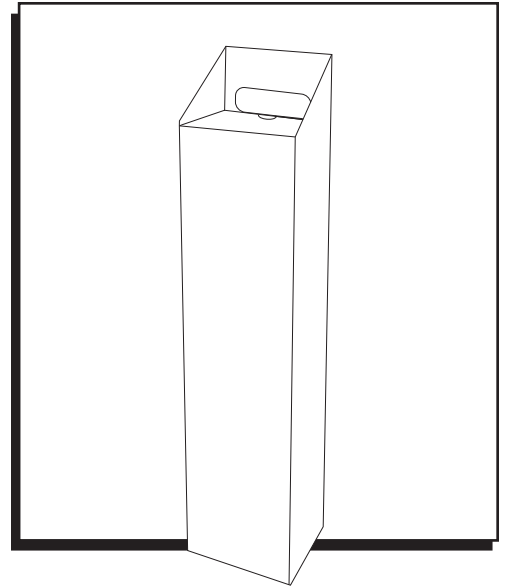


ULINE S-21610

**1 BOTTLE
WINE TOTE**

1-800-295-5510
uline.com



ASSEMBLY

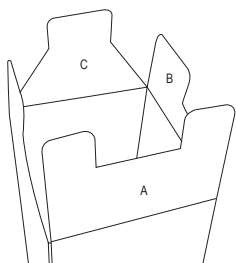


Figure 1

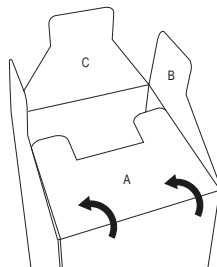


Figure 2

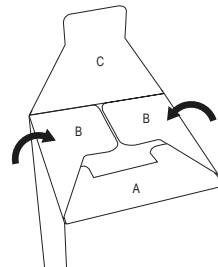


Figure 3

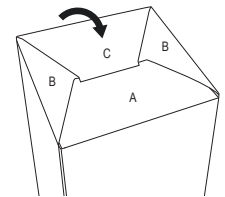


Figure 4

1. Push sides in toward the middle to open tote. Flip upside down to assemble the bottom. (See Figure 1)
2. Bend flap (A) and then flaps (B) at creases. (See Figures 2 and 3)
3. Bend flap (C) at crease and fold inside the middle slot created from step 2. (See Figure 4)
4. Flip the tote over.
5. Fold flap (E) down, lining up the hand hole (F) with the hole at the back of the tote (G). Push middle in to create hand hole. (See Figures 5-6)
6. Bend flap (H) at both creases, tucking panel in to close. (See Figures 7-8)

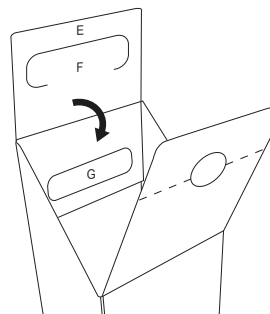


Figure 5

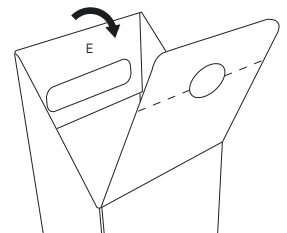


Figure 6

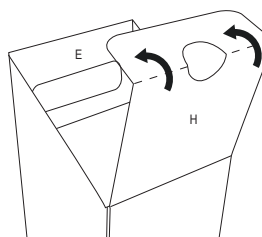


Figure 7

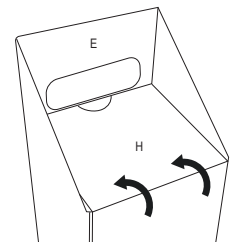


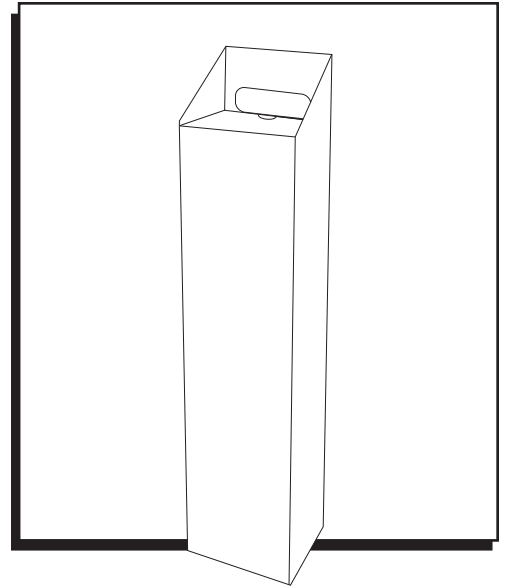
Figure 8

ULINE S-21610

**CAJA CON ASA PARA 1
BOTELLA DE VINO**

01-800-295-5510

uline.mx



ENSAMBLE

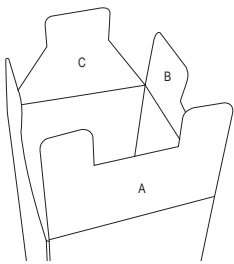


Diagrama 1

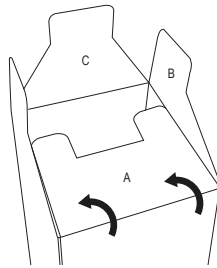


Diagrama 2

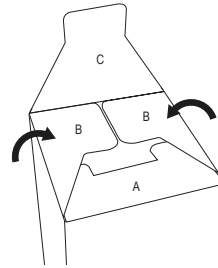


Diagrama 3

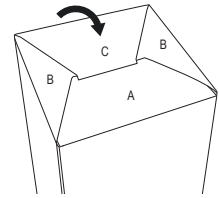


Diagrama 4

1. Doble los lados hacia en medio para abrir la caja. Voltéela del lado opuesto para ensamblar la parte inferior. (Vea Diagrama 1)
2. Doble la solapa (A) y luego las solapas (B) por los pliegues. (Vea Diagramas 2 y 3)
3. Doble la solapa (C) por el pliegue e insértela en la ranura media creada en el paso 2. (Vea Diagrama 4)
4. Vuelva a voltear la caja hacia arriba.
5. Doble la solapa (E) hacia abajo, alineando la abertura del asa (F) con el orificio de la parte posterior de la caja (G). Inserte la parte media hacia adentro para crear el orificio del asa. (Vea Diagramas 5-6)
6. Doble la solapa (H) en ambos pliegues, doble el panel hacia adentro para cerrar. (Vea Diagramas 7-8)

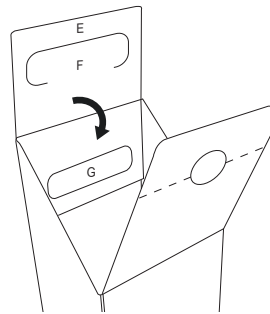


Diagrama 5

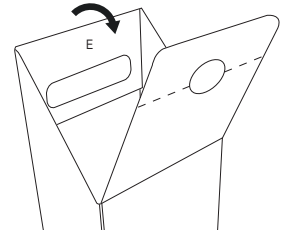


Diagrama 6

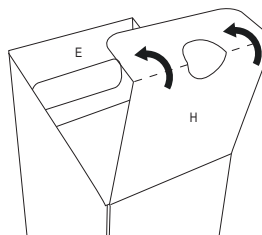


Diagrama 7

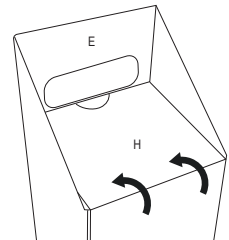


Diagrama 8

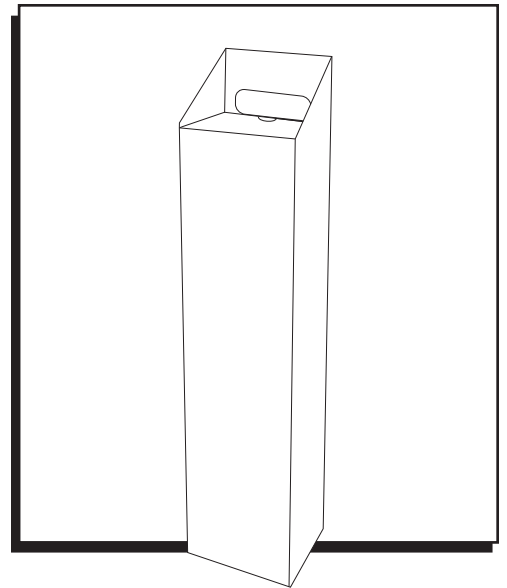
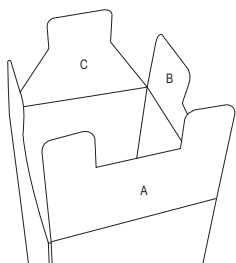
**ASSEMBLAGE**

Figure 1

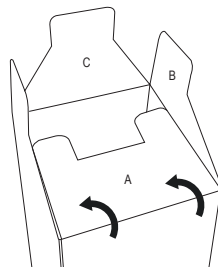


Figure 2

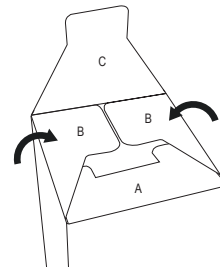


Figure 3

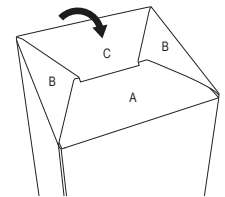


Figure 4

1. Poussez les côtés à l'intérieur vers le centre pour ouvrir la boîte. Retournez-la à l'envers pour assembler le fond. (Voir Figure 1)
2. Abaissez le rabat (A) et ensuite les rabats (B) aux pliures. (Voir Figures 2 et 3)
3. Abaissez le rabat (C) à la pliure et insérez dans la fente au centre formée à l'étape 2. (Voir Figure 4)
4. Retournez la boîte à l'endroit.
5. Pliez le rabat (E) vers le bas en alignant l'orifice de poignée (F) sur celui se trouvant à l'arrière de la boîte (G). Poussez le centre vers l'intérieur afin de créer l'orifice de poignée. (Voir Figures 5 et 6)
6. Abaissez le rabat (H) aux deux pliures en insérant le panneau à l'intérieur pour fermer. (Voir Figures 7 et 8)

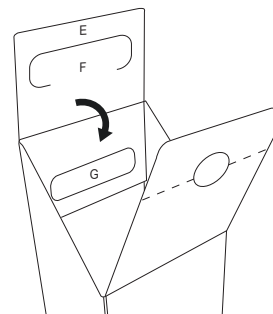


Figure 5

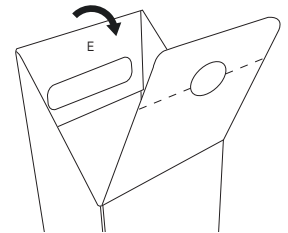


Figure 6

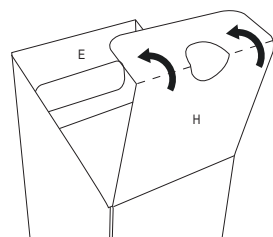


Figure 7

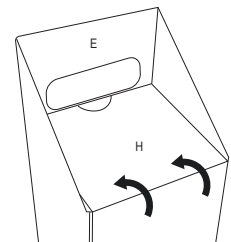


Figure 8