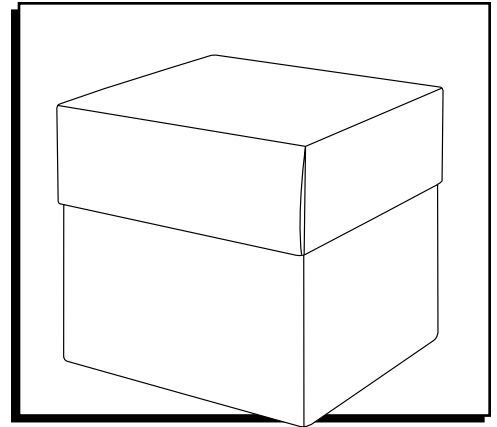




S-22267, S-22268  
 S-22269, S-22270  
 S-22271, S-22272

1-800-295-5510  
 uline.com

# HIGH GLOSS GIFT BOXES



## ASSEMBLY

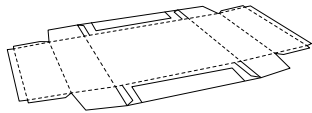


Figure 1

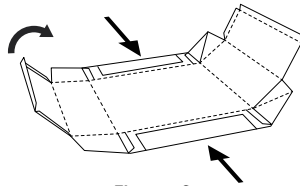


Figure 2

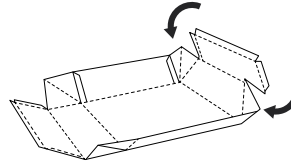


Figure 3

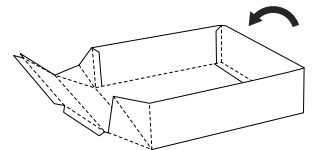


Figure 4

### LID ASSEMBLY



**NOTE:** Before assembling, crease along all folds to ensure proper fit.

1. Lay lid flat with glossy side facing down. (See Figure 1)
2. Fold sides up and inward. (See Figure 2)
3. Crease the corners inward one side at a time. (See Figure 3)
4. Fold the corners completely in and tuck snugly against the end panel. (See Figure 3)
5. Fold the flap up and over so it is flat against the end. (See Figure 4)
6. Repeat on the other side of the lid. (See Figure 5)

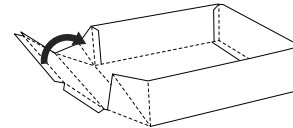


Figure 5

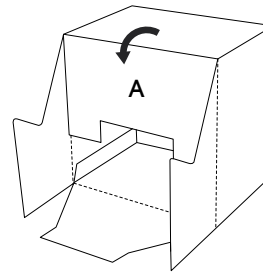


Figure 6

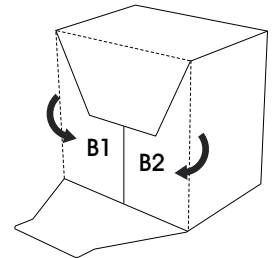


Figure 7

### BASE ASSEMBLY

1. Open flat box and crease flattened edges to create box. Fold down flap A. (See Figure 6)
2. Fold down flaps B1 and B2 and tuck into flap A. (See Figure 7)
3. Fold flap C and tuck into flap A. (See Figure 8)
4. Place lid on base. (See Figure 9)

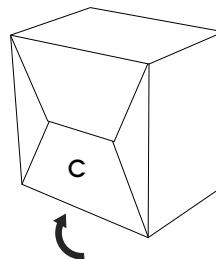


Figure 8

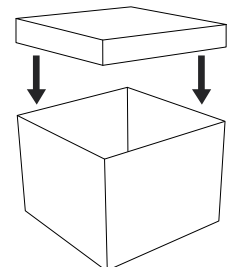


Figure 9