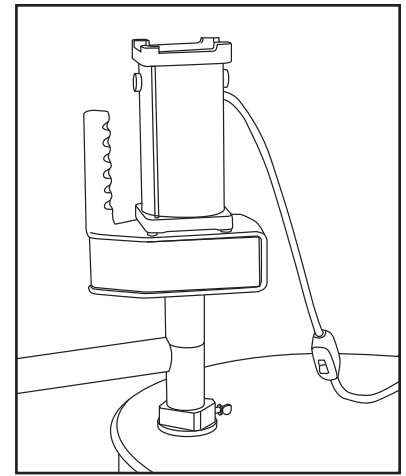
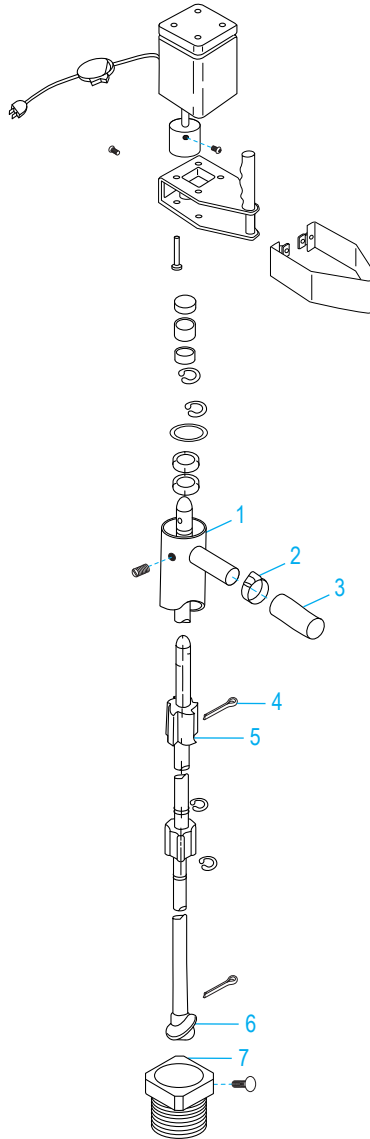


ULINE H-4933 ELECTRIC DRUM PUMP

1-800-295-5510
uline.com

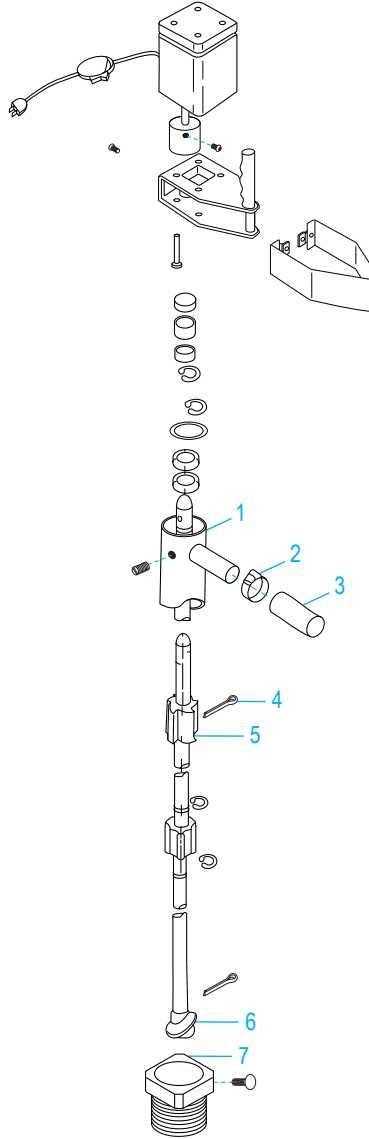
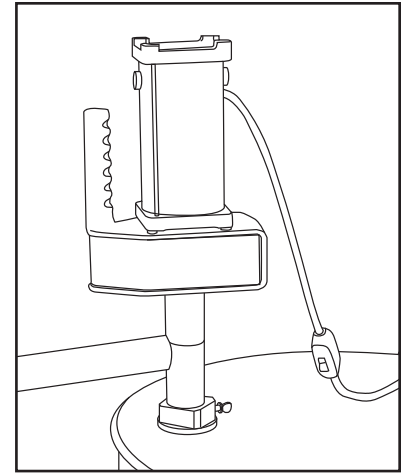
Para Español, vea página 2.
Pour le français, consulter la page 3.



#	DESCRIPTION	QTY.	ULINE PART NO.	MFG. PART NO.
1	Outer Column	1	H-4933-OCLMN	69717
2	Hose Clamp	1	H-4933-CLAMP	1P416
3	5' EPMD Hose	1	H-4933-TUBE	66119
4	Cotter Pin	2	H-4933-CTRPN	66921
5	Impeller	1	H-4933-IMPLR	66722
6	Auger	1	H-4933-AUGER	66829
7	Bung Adapter	1	H-4933-ADAPT	65000

ULINE H-4933
BOMBA ELÉCTRICA
PARA TAMBO

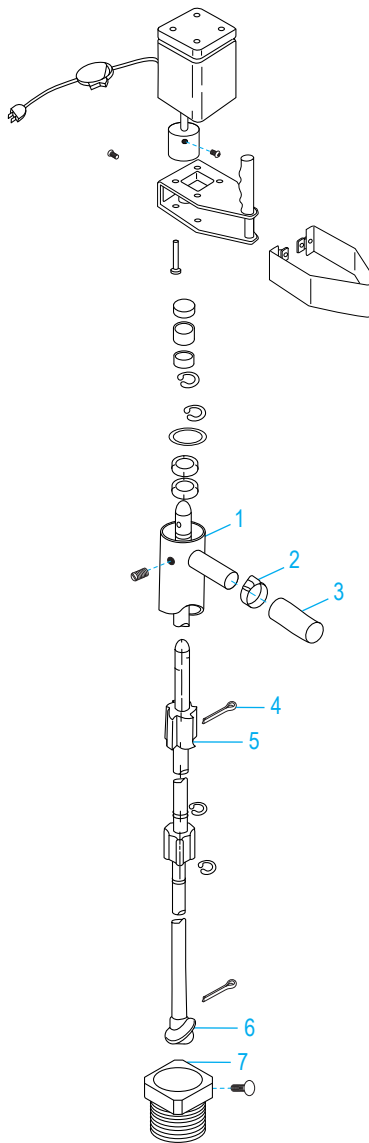
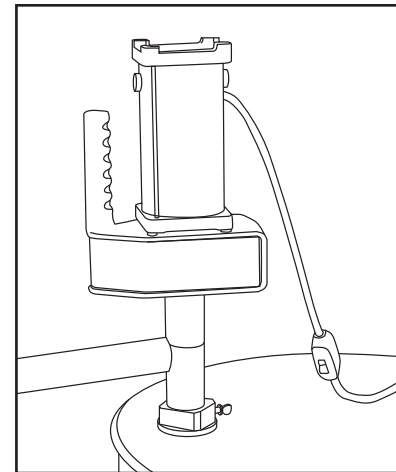
01-800-295-5510
 uline.mx



#	DESCRIPCIÓN	CANT.	NO. DE PARTE DE ULINE	NO. DE PARTE DEL FABRICANTE
1	Columna Exterior	1	H-4933-OCLMN	69717
2	Abrazadera para Manguera	1	H-4933-CLAMP	1P416
3	Manguera EPMD de 5'	1	H-4933-TUBE	66119
4	Pasador	2	H-4933-CTRPN	66921
5	Turbina	1	H-4933-IMPLR	66722
6	Barrena	1	H-4933-AUGER	66829
7	Adaptador de Tapón	1	H-4933-ADAPT	65000

ULINE H-4933
POMPE À BARIL
ÉLECTRIQUE

1-800-295-5510
 uline.ca



#	DESCRIPTION	QTÉ	RÉF. ULINE	RÉF. DU FABRICANT
1	Colonne extérieure	1	H-4933-OCLMN	69717
2	Bride de serrage	1	H-4933-CLAMP	1P416
3	Tuyau en EPMD de 1,5 m (5 pi)	1	H-4933-TUBE	66119
4	Goupille fendue	2	H-4933-CTRPN	66921
5	Rouet centrifuge	1	H-4933-IMPLR	66722
6	Tarière	1	H-4933-AUGER	66829
7	Adaptateur de bonde	1	H-4933-ADAPT	65000