

Service Information

PDD Contact : Cody M. Surwic	Test or Evaluation : Test	Report Number : 59612
Received Date : 10/15/2015	Processed Date : 10/20/2015	Ground

Customer Information

ULINE
12575 ULINE DR
PLEASANT PRAIRIE, WI 53158

Contact: STEVE PLATEK

Phone: 2626124200

FedEx Location Information

Express Station ID: FEPA

Ground Terminal Id: WHLG

Sales Professional : Marie L. Cleveland

Phone Number : 847-420-9224

Field Engineer: Scott Gindt

Phone Number : 262-644-5749

Product Information

Commodity Code : 58	UN No :	Model Number: S-21002	Pcs. Per Pkg:
Values : 20	Product Description: 4 Bottle Wine Pack -		

Packaging Information

Size : L(in): 10 **W (in):** 9.25 **H(in):** 15.5 **Wt (lb):** 12.2 **Outer Container Type:** Corrugated

Container Specs: A-Flute Singlewall N/A N/A

Other Outer Info: FOL box style

Inner Packaging I: EPS mold **Inner Packaging II:** **Sealing Method:** 3" PST

Other Inner Info: EPS molds

Test Procedures Completed

Test Type : International - FedEx	
Drop Height (in) : 30 inches	Drop Sequence : Two Sets Free - Fall
Drop Results: See Comments and Packaging Recommendations on pg 2	
Compression Factor: 5	Compression Load (lbf) : 299
Compression Results: Meets Minimum Specifications	
Vibration Profile: International FedEx	Vibration Duration: 90 Minutes Random
Vibration Results: See Comments and Packaging Recommendations on pg 2	
Impact Sequence:	Impact Velocity (ft/s):
Impact Results:	
Other Applicable Tests:	Results:

Test Results

Result: See Comments

Definitions of Results

- Passed:** A package, with article, that has passed all the Fedex Standard Testing Procedures. For commodities restricted under Liabilities Not Assumed in the Fedex Service Guide, Service Guide Terms and Conditions will take precedence.
- Failed:** A package, with article, that has failed all FedEx Standard Testing Procedures.
- Pending:** A package, with article, that has been tested to all FedEx Standard Test Procedures. Confirmation of results is subject to customer inspection.

Comments and Packaging Recommendations*

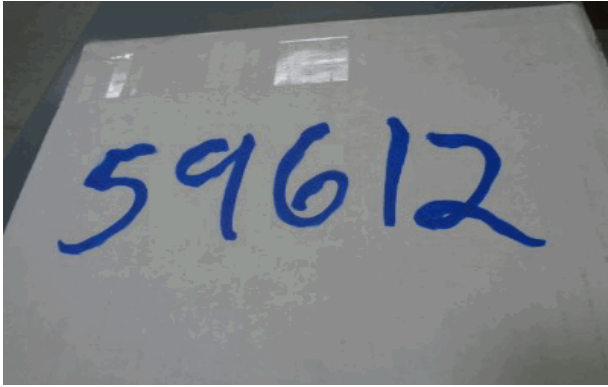
Current Packaging, FedEx Package Testing Procedures for shipment under 150 lbs., or ISTA 6-FedEx-A, were followed for this test.

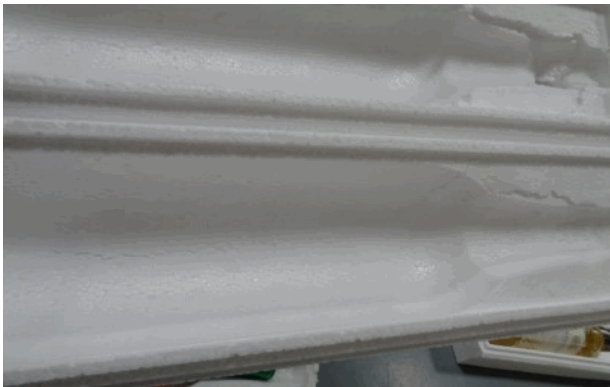
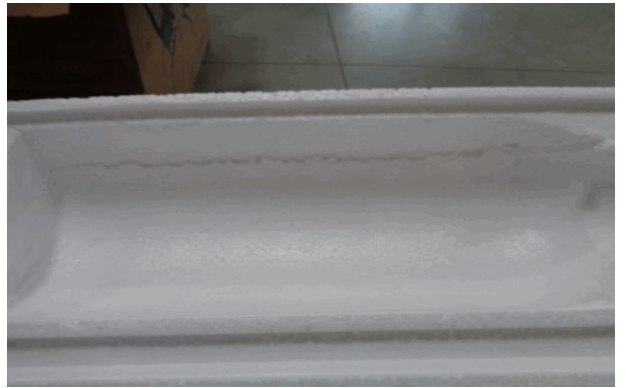
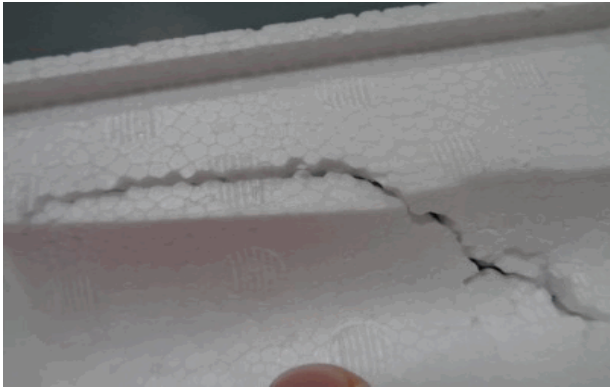
The report is see comment due to uline not being a wine shipper.

After testing the package was not leaking. The only thing noticed was cracking in the EPS molds. Please refer to the pictures on the following pages.

Peak compression force was 300 lbs. with a deflection @ peak of 0.15", thereby meeting 100% of the target (299 lbs.).

Photos / Drawings (if Applicable)





* Our provision of advice, assistance or guidance on the appropriate packaging of shipment does not constitute acceptance of liability, unless such advice, assistance or guidance is in writing from the FedEx Packaging Design and Development department and expressly accepts liability in the event of a damaged shipment.

FedEx Packaging Design and Development 789 Progress Rd, Collierville, TN 38017
Toll Free 800.633.7019 option 5 Fax : 901.492.7278